



Z8ENCORE000ZCO

*Z8 Encore!TM Flash
Microcontroller Development Kit*

User Manual

PRELIMINARY

UM013106-1102



This publication is subject to replacement by a later edition. To determine whether a later edition exists, or to request copies of publications, contact:

ZiLOG Worldwide Headquarters

532 Race Street

San Jose, CA 95126-3432

Telephone: 408.558.8500

Fax: 408.558.8300

www.ZiLOG.com

Document Disclaimer

ZiLOG is a registered trademark of ZiLOG Inc. in the United States and in other countries. All other products and/or service names mentioned herein may be trademarks of the companies with which they are associated.

©2002 by ZiLOG, Inc. All rights reserved. Information in this publication concerning the devices, applications, or technology described is intended to suggest possible uses and may be superseded. ZiLOG, INC. DOES NOT ASSUME LIABILITY FOR OR PROVIDE A REPRESENTATION OF ACCURACY OF THE INFORMATION, DEVICES, OR TECHNOLOGY DESCRIBED IN THIS DOCUMENT. ZiLOG ALSO DOES NOT ASSUME LIABILITY FOR INTELLECTUAL PROPERTY INFRINGEMENT RELATED IN ANY MANNER TO USE OF INFORMATION, DEVICES, OR TECHNOLOGY DESCRIBED HEREIN OR OTHERWISE. Except with the express written approval of ZiLOG, use of information, devices, or technology as critical components of life support systems is not authorized. No licenses are conveyed, implicitly or otherwise, by this document under any intellectual property rights.



Safeguards

The following precautions must be observed when working with the devices described in this document.



Caution: Always use a grounding strap to prevent damage resulting from electrostatic discharge (ESD).



Table of Contents

Introduction	1
Kit Contents	2
Hardware	2
Software (on CD-ROM)	3
Documentation	3
System/Software Requirements	4
Suggested Host System Configuration	4
Minimum Host System Configuration	4
Installation	5
Setting up the Evaluation Board	5
Changing the Universal 9VDC Power Supply Plug Configurations	7
Installing the ZDS-II Z8 Encore! TM Software	8
Getting Started	13
Using ZDS	13
Z8 Encore!TM Evaluation Board	15
Introduction	15
Features	15
Block Diagram	16
MCU	18
LED Array	19
Serial Communications Devices	20
I2C Interface	20
SPI Interface	21
IrDA Transceiver	21
Power and Communication Interfaces	22
Target Interface Module Board	22
Expansion Module Interface	22
Configuration Headers/Jumpers	28

Z8 Encore!TM Flash Microcontroller Development Kit User Manual



v

Embedded Modem	32
Pushbuttons	33
Schematics	34
Index	40



List of Figures

Figure 1.	Z8 Encore! TM Development Kit Contents	2
Figure 2.	Evaluation Board External Connections	6
Figure 3.	9VDC Universal Power Supply Components	7
Figure 4.	Inserting a New Plug Configuration	8
Figure 5.	Installation Wizard	9
Figure 6.	License Agreement	10
Figure 7.	Registration Key	11
Figure 8.	Installation Directory	12
Figure 9.	Open Project Dialog Box	13
Figure 10.	Major Z8 Encore! TM Evaluation Board Blocks	16
Figure 11.	Z8 Encore! TM Evaluation Board Block Diagram	17
Figure 12.	Target Interface Module Board	22
Figure 13.	Embedded Modem Placement	32
Figure 14.	User-Configurable Pushbuttons	33



List of Tables

Table 1.	LED Anode Assignments	19
Table 2.	LED Cathode/Modem/Trigger	20
Table 3.	LED Addressing	20
Table 4.	I2C Address for Configuration Register on the PCA8550 (U2)	21
Table 5.	Header J6	23
Table 6.	Header J8	25
Table 7.	Configuration Headers and Jumpers	28
Table 8.	J6.9–J6.11 -Modem Enable/Disable	29
Table 9.	J6.12–J6.14 -Console Enable/Disable	29
Table 10.	J7 External Vref	30
Table 11.	J9 Vref	30
Table 12.	J10 IrDA Enable/Disable	30
Table 13.	J11 SocketModem Power (3VDC/5VDC)	30
Table 14.	J12–RS-485_1_Enable First Interface	31
Table 15.	J13–RS-485_1_Enable Second Interface	31
Table 16.	J14–RT_1,Termination Resistors Enable, RS-485 First Interface	31
Table 17.	J15–RT_2,Termination Resistors Enable, RS-485 Second Interface	31
Table 18.	SocketModem Ordering Information	33



Introduction

The Z8 Encore!TM Flash Microcontroller (MCU) is the first in the new line of ZiLOG microcontroller products. This board supports the Z8 Encore!TM and introduces Flash to the Z8® line of microcontrollers.

The Z8 Encore!TM Development Kit (Z8ENCORE000ZCO) allows users to become familiar with the hardware and software tools available with this product. This kit consists of the 64KB version of the Z8 Encore!TM Evaluation board that supports and presents the features of the Z8 Encore!TM. The software development tool kit allows users to begin writing application software and contains all supporting documents.

This manual acquaints users with the Z8 Encore!TM Development Kit, and gives instructions on setting up and using the tools to start building designs and applications. Figure 1 illustrates the contents of the Z8 Encore!TM Development Kit.

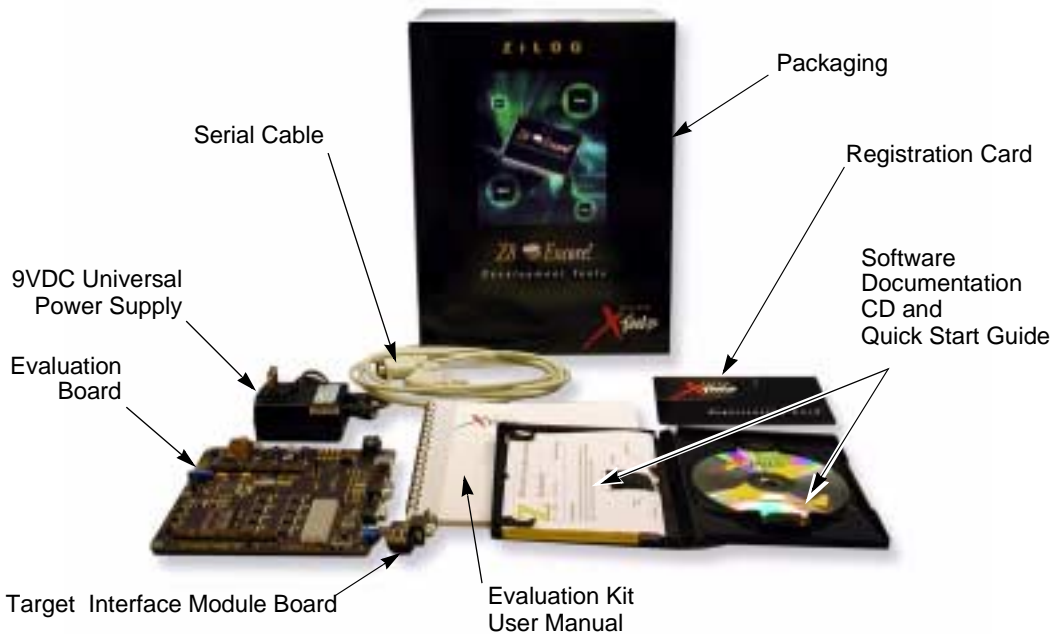


Figure 1. Z8 Encore!™ Development Kit Contents

Kit Contents

The Z8 Encore!™ Flash Microcontroller Development Kit contains the following:

Hardware

- Z8 Encore!™ Evaluation board
- Z8 Encore!™ Target Interface Module board
- Serial cable to Z8 Encore!™ Target Interface Module (DB9 male to DB9 female RS-232)



Windows Explorer, open the CD-ROM drive icon using right mouse button.

System/Software Requirements

IBM PC (or compatible computer) with the following recommended configurations:

Suggested Host System Configuration

- Win98SE/NT4.0-SP6/Win2000-SP2/WinXP
- Pentium III/500MHz processor or higher
- 128MB RAM or more
- 40MB hard disk space
- Super VGA video adapter
- CD-ROM
- One or more RS-232 communication ports

Minimum Host System Configuration

- Windows 98/NT
- Pentium II 233MHz processor
- 96MB RAM
- 25MB hard disk space
- Super VGA video adapter
- CD-ROM
- One or more RS-232 communication ports



Windows Explorer, open the CD-ROM drive icon using right mouse button.

System/Software Requirements

IBM PC (or compatible computer) with the following recommended configurations:

Suggested Host System Configuration

- Windows 98/NT/2000/Me/XP
- Pentium III/500MHz processor or higher
- 128MB RAM or more
- 40MB hard disk space
- Super VGA video adapter
- CD-ROM
- One or more RS-232 communication ports

Minimum Host System Configuration

- Windows 98/NT
- Pentium II 233MHz processor
- 96MB RAM
- 25MB hard disk space
- Super VGA video adapter
- CD-ROM
- One or more RS-232 communication ports



Installation

This chapter describes the installation of hardware and software tools for the Z8 Encore!TM Evaluation Kit. The first section describes setting up the evaluation board and substituting plug configurations of the universal 9VDC power supply. The second section describes installing the ZDS II IDE Z8 Encore!TM software.

Setting up the Evaluation Board

The PC communicates with the Z8 Encore!TM Flash Microcontroller Evaluation board using the serial port of the PC. A Z8 Encore!TM Target Interface Module board converts the RS-232 signals into the 3.3V bi-directional open-drain signal needed to communicate with the on-chip debugger of the eZ8. This Z8 Encore!TM Target Interface Module board is a small circuit board with a DB9 female connector on one end and a six-pin right angle female connector on the other end.



Caution: Always use a grounding strap to prevent damage resulting from electrostatic discharge (ESD).

1. Connect the serial port of the PC to the Z8 Encore!TM Target Interface Module board.
2. Connect the Z8 Encore!TM Target Interface Module board to the Z8 Encore!TM Flash Microcontroller Evaluation Board pin header P4.
3. Connect the 9VDC universal power supply to the Evaluation board, then to an electrical outlet (see Figure 4).

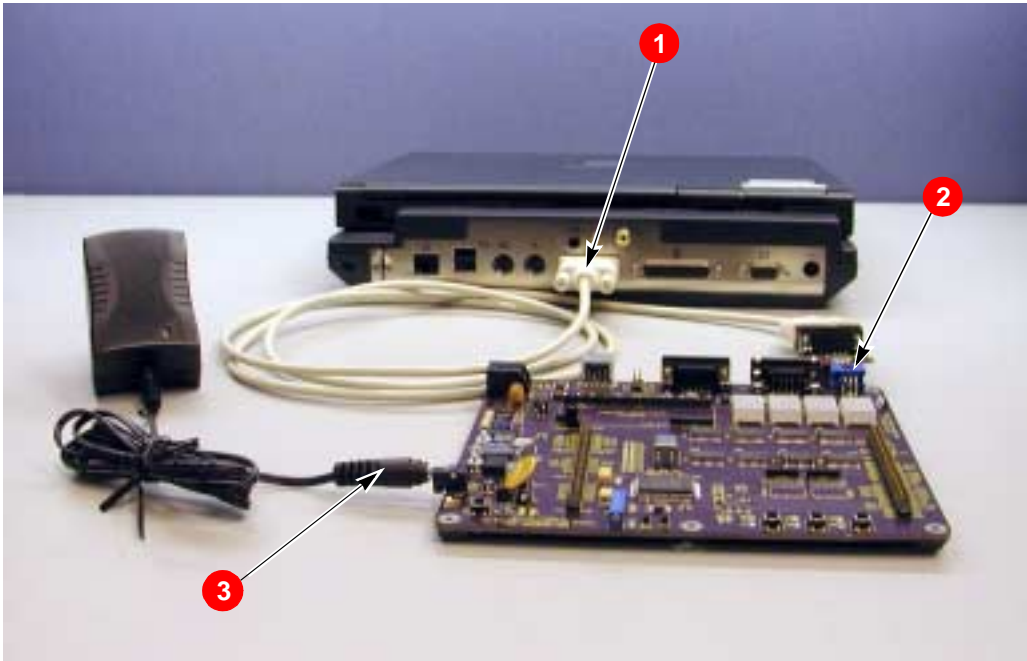


Figure 4. Evaluation Board External Connections

Changing the Universal 9VDC Power Supply Plug Configurations

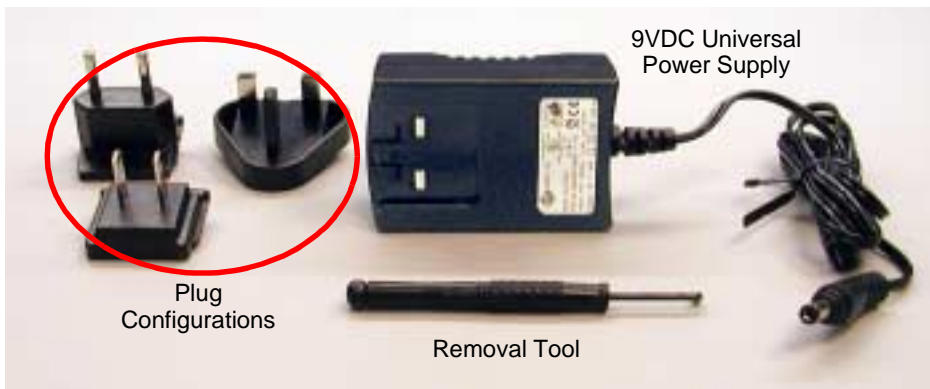


Figure 5. 9VDC Universal Power Supply Components

The universal 9VDC power supply features three different plug configurations, the power supply itself and a tool that aids in removing one plug configuration to insert another.

To substitute one plug configuration for another, follow these steps:

1. Using the removal tool, place it in the round hole at the top of the current plug configuration.
2. Press down to disengage the keeper tab and push the plug configuration out of its slot.
3. Select the plug configuration of choice for your location, and insert it into the slot left by the previous plug configuration.
4. Push the new plug configuration down until it snaps into place (Figure 6).



Figure 6. Inserting a New Plug Configuration

Installing the ZDS-II Z8 Encore![™] Software

Perform the following steps to install the software tools:

1. Load the ZDS II-Z8 Encore![™] Flash Microcontroller CD into the CD-ROM drive of the host PC. The CD launches automatically and displays the Installation Wizard (Figure 7).

► **Note:** Software versions shown in the following illustrations are for reference only. You may have an updated version.



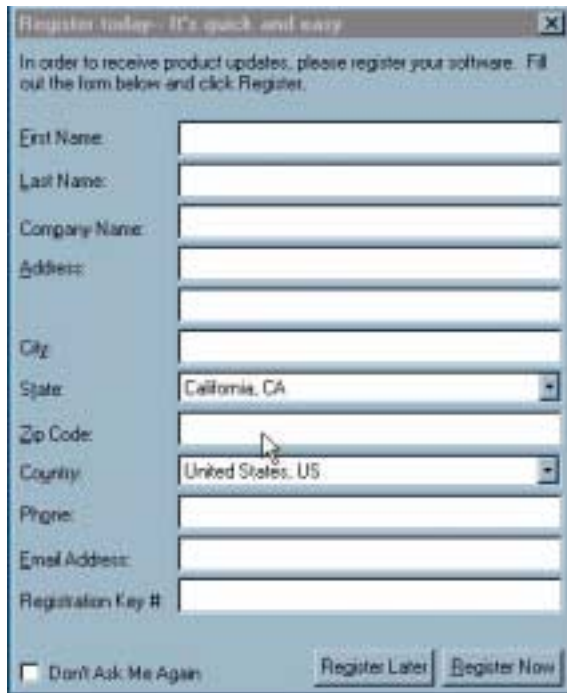
Figure 7. Installation Wizard (Reference Only)

2. Click Next> to continue with the installation. The License Agreement appears (Figure 8).



Figure 8. License Agreement (Reference Only)

3. Select Yes to accept the agreement and proceed with the installation.
4. After selecting Yes, the Registration Key screen appears (Figure 9). Enter the Registration Key identifier found on the registration card you received in the Development Kit.



Register today - It's quick and easy

In order to receive product updates, please register your software. Fill out the form below and click Register.

First Name:

Last Name:

Company Name:

Address:

City:

State:

Zip Code:

Country:

Phone:

Email Address:

Registration Key #:

Don't Ask Me Again

Figure 9. Registration Key (Reference Only)

5. After entering your registration key information, select Next>.
6. A prompt appears for the installation directory.
7. Select the default directory (Figure 10).
8. If the directory already exists, a prompt appears to determine if you want to overwrite it.

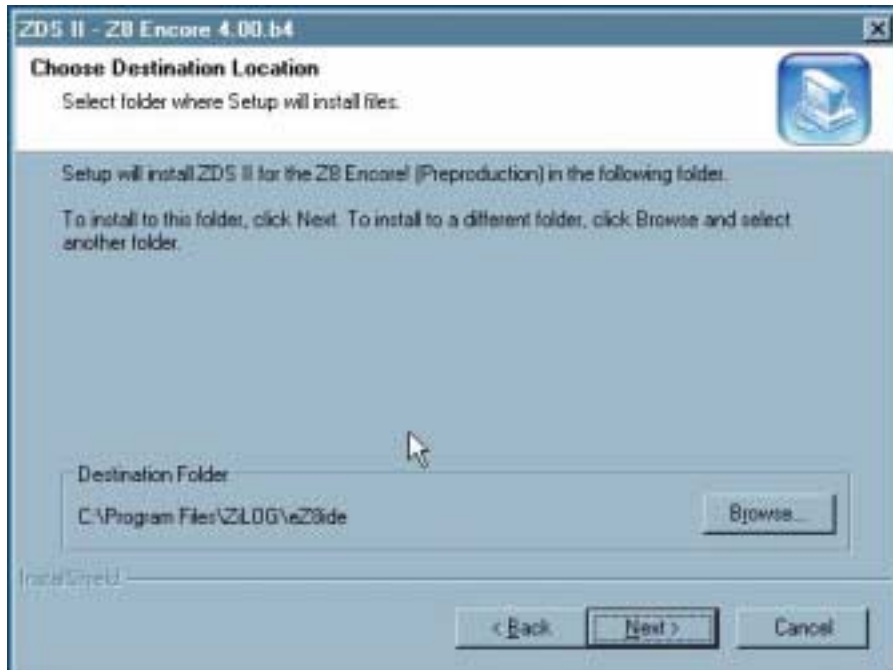


Figure 10. Installation Directory (Reference Only)

9. Select the Program Folder name. ZiLOG recommends using the default name.
10. Click Next> to continue. The installation continues loading the ZDS II-Z8 Encore!™ software onto the host PC.
11. When the installation is complete, a registration window appears requesting essential registration information. Enter this information and click Register Later to register via the Internet. To register at a later time, the registration window can be found in the ZDS II Help menu.



12. The following directory is installed on the host PC, assuming all installation settings remain at their defaults:

C:/Program Files/ZiLOG/eZ8ide

Getting Started

Using ZDS

Perform the following procedure to open an existing project.

1. Connect the Evaluation board to the host PC's serial communications port.
2. Apply 9VDC power to the Evaluation board.
3. Run the ZDS II Software (Start > Programs > ZDS II-Z8 Encore IDE > ZDS II-Z8Encore .
4. Select Open Project from the File menu. The Open Project dialog box appears. See Figure 11.

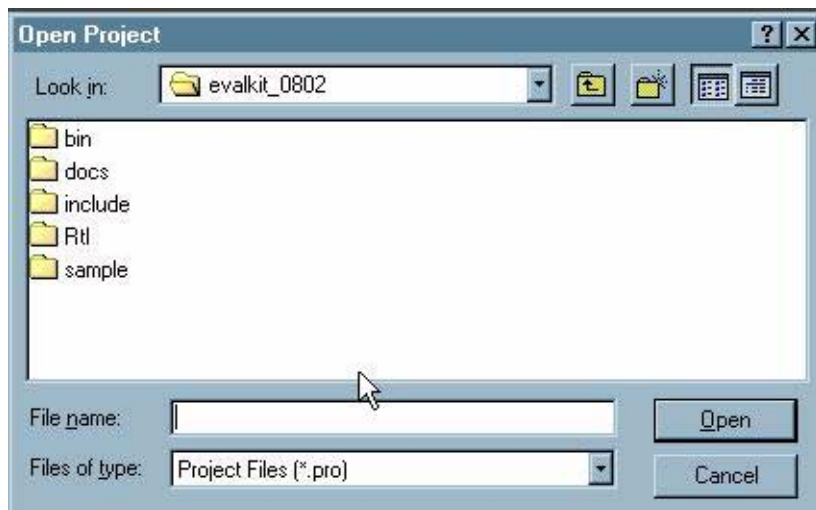


Figure 11. Open Project Dialog Box



5. Select `ledblink.pro` or browse to `C:\Program Files\ZiLOG\Z8ide\sample` directory and select `ledblink.pro`.
6. Click on **Reset** button to connect and download the code to the Evaluation board.
7. Click on **Go** to start the program.

For additional information, refer to Chapter 1, Getting Started, in the ZiLOG Developer Studio II, Z8 Encore™ User Manual, UM00130.



Z8 Encore!TM Evaluation Board

Introduction

Z8 Encore!TM Evaluation board (64KB version) is an evaluation and prototyping board for the Z8 Encore!TM family of microcontrollers. The board provides customers with a tool to evaluate features of Z8 Encore!TM family, and to start developing an application before building the hardware.

Features

- Z8 Encore!TM MCU
- LED array with four 7 x 5 LED matrices
- Serial Communications Devices
 - I²C configuration IC for Expansion Module
 - SPI Interface with temperature sensor
- IrDA transceiver
- Power and communication interfaces
 - 9VDC power supply
 - Two RS-232 connectors
 - One RS-485 connector with two ports
- Target Interface Module
- Expansion Module interface
- Embedded modem socket with U.S. phone line interface (modem is not included in the kit)
- Three pushbuttons

Block Diagram

The board consists of seven major blocks (Figure 10):

1. Z8 Encore!TM MCU
2. Serial communication devices (SPI and I²C)
3. Power and communication interfaces
4. LED array
5. Expansion Module interfaces
6. IrDA transceiver
7. Target Interface Module connector

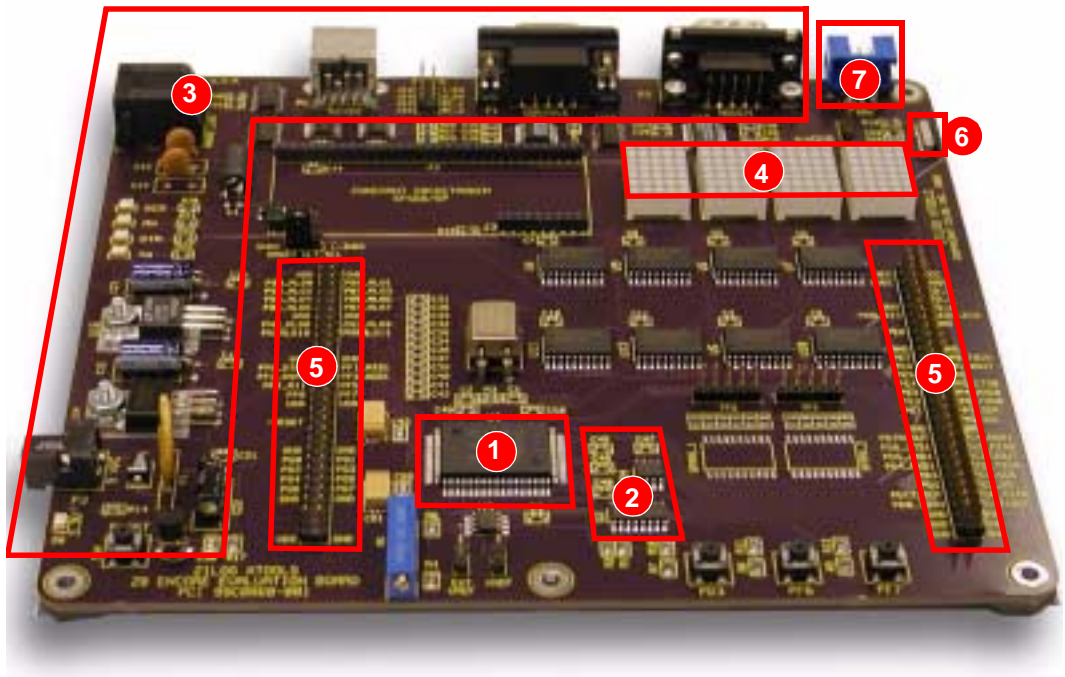


Figure 10. Major Z8 Encore!TM Evaluation Board Blocks

Figure 11 illustrates the Z8 Encore!™ evaluation board block diagram.

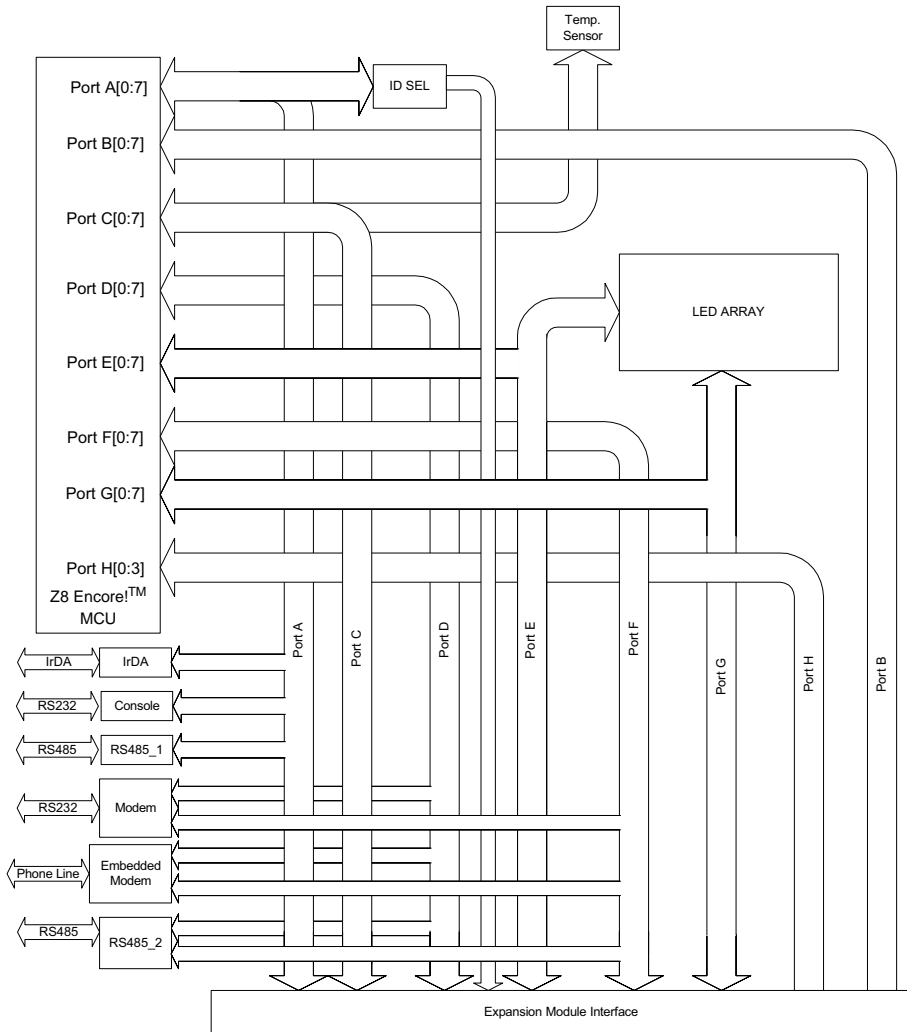


Figure 11. Z8 Encore!™ Evaluation Board Block Diagram



MCU

The Z8 Encore!™ MCU family of products are the first in a line of ZiLOG microcontroller products based upon the new 8-bit eZ8 core CPU. The Flash in-circuit programming capability allows for faster development time and program changes in the field. The new eZ8 core CPU is upward compatible with existing Z8® instructions. The rich peripheral set of the Z8 Encore!™ makes it suitable for a variety of applications including motor control, security systems, home appliances, personal electronic devices, and sensors.

The Evaluation Board contains circuitry to support and presents all the features of the Z8 Encore!™. The main features of the Z8 Encore!™ are:

- eZ8 core CPU
- 64KB Flash memory with in-circuit programming capability
- 4KB register RAM
- 12-channel, 10-bit analog-to-digital converter (ADC)
- Two full-duplex UARTs
- I²C interface (Master Mode only)
- Serial Peripheral Interface (SPI)
- Two Infrared Data Association (IrDA)-compliant infrared encoder/decoders
- Four 16-bit timers with capture, compare, and PWM capability
- Watch-Dog Timer (WDT) with internal RC oscillator
- 3-channel DMA
- Up to 60 I/O pins
- 24 interrupts with configurable priority
- On-Chip Debugger



- Voltage Brown-out Protection (VBO)
- Power-On Reset (POR)
- 3.0-3.6V operating voltage with 5V-tolerant inputs
- 0° to +70°C operating temperature

For further information on the Z8 Encore!™ family of devices, consult the product specification, P/N PS0176.

LED Array

The LED array display user information. There are four 7x5 LED matrixes. To light up an LED dot the appropriate Anode bit must be 1, and the correlated Cathode must be 0. All Anodes are addressed by Port G, and Cathodes are addressed by Port E. Every LED Matrix is addressed by separate pair of registers. Each of the register pairs is addressed by a bit of Port E or Port G. Tables 1 through 4 describe how to address each Anode and Cathode of D1 through D4.

Table 1. LED Anode Assignments

Function \ Port G Bit #	6	5	4	3	2	1	0
Anode Row 0							X
Anode Row 1						X	
Anode Row 2					X		
Anode Row 3				X			
Anode Row 4			X				
Anode Row 5		X					
Anode Row 6	X						

Note: Row 0 = Topmost Row



Table 2. LED Cathode/Modem/Trigger

Function \ Port E Bit #	4	3	2	1	0
Cathode Column 0					X
Cathode Column 1				X	
Cathode Column 2			X		
Cathode Column 3		X			
Cathode Column 4	X				
Note: Column 0 = Leftmost Column					

Table 3. LED Addressing

Function \ Port, Bit #	PE[5]	PE[6]	PE[7]	PG[7]
D3	X			
D4		X		
D1			X	
D2				X

Serial Communications Devices

I²C Interface

The Z8 Encore!™ is compatible with I²C protocol (in this case the PCA8550). The I²C controller consists of two bidirectional bus lines, a serial data (SDA) line and a serial clock (SCL) line.

The I²C Controller operates in Master mode to transmit and receive data.

Having a PCA8550 on board enables configuration of the Expansion Module. The PCA8550 is a 4-bit multiplexer that selects four bits of data either from a non-volatile register or from the input pins. In this case four input pins are left unconnected and only a non-volatile register is selected as a source of data. Only three bits are used. Currently this chip is not used by the software provided with the board, so a user is free to use it to their advantage. The configuration register (Table 4) is available at the



address 0x9C for Read operation and 0x9D for Write operation on the PCA8550 device. Please refer to the PCA8550 Product Specification (www.semiconductors.philips.com) for more details on programming this device.

Table 4. I²C Address for Configuration Register on the PCA8550 (U2)

Device \ Bit #	7	6	5	4	3	2	1	0
Value	1	0	0	1	1	1	0	R/W

SPI Interface

The serial peripheral interface (SPI) allows the Z8 Encore!TM to exchange data between other peripheral devices such as EEPROMs, A/D converters and ISDN devices. The SPI is a full-duplex, synchronous, character-oriented channel that supports a four-wire interface.

To work with SPI interface for temperature/sensor types of applications, DS1722 Digital Thermometer was incorporated into the board. The serial mode is SPI. Refer to the DS1722 Product Specification (http://www.maxim-ic.com/pl_list.cfm/filter/11) for more details on programming the device.

IrDA Transceiver

The Z8 Encore!TM contains two fully-functional, high-performance UARTs with Infrared Encoder/Decoders (Endec). The Infrared Endec is integrated with an on-chip UART to allow easy communication between the Z8 Encore!TM and IrDA transceivers. Infrared communication provides secure, reliable, low-cost, point-to-point communication between PCs, PDAs, cell phones, printers and other infrared enabled devices.

Power and Communication Interfaces

- A 9VDC power supply powers the board
- Two RS-232 DB9 connectors and an RS-485 connector with two ports
- A ZiLOG IrDA transceiver is integrated onto the Z8 Encore!TM evaluation board

Target Interface Module Board

The Z8 Encore!TM Target Interface Module board (Figure 12) enables communication with the Host computer. The Z8 Encore!TM Target Interface Module Board converts a one-wire interface to a two-wire (TxD and RxD) RS-232-like interface with RS-232 levels.



Figure 12. Target Interface Module Board

Expansion Module Interface

The Expansion Module Interface allows addition of any plug-in modules. The Expansion Module Interface brings out the signals from the Z8 Encore!TM device for debug and testing.



Two 60-pin male headers, J6 and J8, implement the Expansion Interface Module. Tables 5 and 6 list the signals and their direction, where applicable.

Table 5. Header J6

Pin #	Signal Name	Function	Direction	Comments
1		VCC		
2		VCC		
3		9VDC		
4		9VDC		
5	SCL	I ² C Clock	OUT	
6	ID2	Evaluation Board ID	OUT	
7	SDA	I ² C Data	IN/OUT	
8	ID1	Evaluation Board ID	OUT	
9		GND		
10	ID0	Evaluation Board ID	OUT	
11	-MOD_DIS	Modem Disable	OUT	If a shunt is installed the Modem Function on the evaluation board is disabled
12	-CON_DIS	Console Disable	OUT	If a shunt is installed the Console Function on the evaluation board is disabled
13	-MWAIT		IN	Reserved (see note)
14	GND			
15	PE0	Port E, Bit 0	IN/OUT	
16				
17	-CS3			Reserved (see note)
18				
19	GND			
<p>Note: Do not use pins marked Reserved when designing Expansion Modules. All of the signals are driven directly by the MCU.</p>				



Table 5. Header J6 (Continued)

Pin #	Signal Name	Function	Direction	Comments
20	GND			
21	PE7	Port E, bit 7	IN/OUT	
22	PA0	Port A, bit 0	IN/OUT	T0IN
23	PE6	Port E, bit 6	IN/OUT	
24	PA1	Port A, bit1	IN/OUT	T0OUT
25	PE5	Port E, bit 5	IN/OUT	
26	PA2	Port A, bit 2	IN/OUT	
27	PE4	Port E, bit 4	IN/OUT	
28	PA3	Port A, bit 3	IN/OUT	CTS0
29	PE3	Port E, bit 3	IN/OUT	
30	PA4	Port A, bit 4	IN/OUT	RXD0
31	PE2	Port E, bit 2	IN/OUT	
32	PA5	Port A, bit 5	IN/OUT	TXD0
33	PE1	Port E, bit 1	IN/OUT	
34	PA7	Port A, bit 7	IN/OUT	SDA
35	RESERVED			
36	PA6	Port A, bit 6	IN/OUT	SCL
37		GND		
38		GND		
39	PD7	Port D, bit 7	IN/OUT	RCOUT
40	PC4	Port C, bit 4	IN/OUT	MOSI
41	PD6	Port D, bit 6	IN/OUT	CTS1
42	PC3	Port C, bit 3	IN/OUT	MISO
43	PD5	Port D, bit 5	IN/OUT	TXD1
44	PC7	Port C, bit 7	IN/OUT	T2OUT
45	PD4	Port D, bit 4	IN/OUT	RXD1
<p>Note: Do not use pins marked Reserved when designing Expansion Modules. All of the signals are driven directly by the MCU.</p>				



Table 5. Header J6 (Continued)

Pin #	Signal Name	Function	Direction	Comments
46	PC6	Port C, bit 6	IN/OUT	T2IN
47	PD3	Port D, bit 3	IN/OUT	
48	PC3	Port C, bit 3	IN/OUT	SCK
49	PD2	Port D, bit 2	IN/OUT	
50	PC2	Port C, bit 2	IN/OUT	SS
51	PD1	Port D, bit 1	IN/OUT	T3OUT
52	PC0	Port C, bit 0	IN/OUT	T1IN
53	PD0	Port D, bit 0	IN/OUT	T3IN
54	PC1	Port C, bit 1	IN/OUT	T1OUT
55		GND		
56		GND		
57		GND		
58		GND		
59		GND		
60		GND		
<p>Note: Do not use pins marked Reserved when designing Expansion Modules. All of the signals are driven directly by the MCU.</p>				

Table 6. Header J8

Pin #	Signal Name	Function	Direction	Comments
1		VDD		
2		GND		
3	PB0	Port B, bit 0	IN	ALG0 Analog input
4	PB1	Port B, bit 1	IN	ALG1 Analog input
5	PB2	Port B, bit 2	IN	ALG2 Analog input
<p>Note: Do not use pins marked Reserved when designing Expansion Modules. All of the signals are driven directly by the MCU.</p>				



Table 6. Header J8 (Continued)

Pin #	Signal Name	Function	Direction	Comments
6	PB3	Port B, bit 3	IN	ALG3 Analog input
7	PB4	Port B, bit 4	IN	ALG4 Analog input
8	PB5	Port B, bit 5	IN	ALG5 Analog input
9	PB6	Port B, bit 6	IN	ALG6 Analog input
10	PB7	Port B, bit 7	IN	ALG7 Analog input
11		GND		
12		GND		
13	PH0	Port H, bit 0	IN	ALG8 Analog input
14	PH1	Port H, bit 1	IN	ALG9 Analog input
15	PH2	Port H, bit 2	IN	ALG10 Analog input
16	PH3	Port H, bit 3	IN	ALG11 Analog input
17				Reserved (see note)
18				Reserved (see note)
19				Reserved (see note)
20				Reserved (see note)
21		GND		
22		GND		
23	PF0	Port F, bit 0	IN/OUT	DTR1
24	PF1	Port F, bit 1	IN/OUT	RTS1
25	PF2	Port F, bit 2	IN/OUT	DSR1
26	PF3	Port F, bit 3	IN/OUT	DCD1
27	PF4	Port F, bit 4	IN/OUT	RI1
28	PF5	Port F, bit 5	IN/OUT	
29	PF6	Port F, bit 6	IN/OUT	
30	PF7	Port F, bit 7	IN/OUT	
31		VDD		
<p>Note: Do not use pins marked Reserved when designing Expansion Modules. All of the signals are driven directly by the MCU.</p>				



Table 6. Header J8 (Continued)

Pin #	Signal Name	Function	Direction	Comments
32		VDD		
33	-RD	Read		Reserved (see note)
34	-WR	Write		Reserved (see note)
35	-RESET	Pushbutton reset	OUT	
36	INSTRD			Reserved (see note)
37	-BUSACK			Reserved (see note)
38	-BUSREQ			Reserved (see note)
39	-NMI			Reserved (see note)
40	PHI			Reserved (see note)
41		GND		
42		GND		
43	PG0	Port G, bit 0	IN/OUT	
44	PG1	Port G, bit 1	IN/OUT	
45	PG2	Port G, bit 2	IN/OUT	
46	PG3	Port G, bit 3	IN/OUT	
47	PG4	Port G, bit 4	IN/OUT	
48	PG5	Port G, bit 5	IN/OUT	
49	PG6	Port G, bit 6	IN/OUT	
50	PG7	Port G, bit 7	IN/OUT	
51		GND		
52		GND		
53	-CS0			Reserved (see note)
54	-CS1			Reserved (see note)
55	-CS2			Reserved (see note)
56	-CSx			Reserved (see note)
<p>Note: Do not use pins marked Reserved when designing Expansion Modules. All of the signals are driven directly by the MCU.</p>				



Table 6. Header J8 (Continued)

Pin #	Signal Name	Function	Direction	Comments
57	-MEMRQ			Reserved (see note)
58	-IORQ			Reserved (see note)
59		VDD		
60		GND		
Note: Do not use pins marked Reserved when designing Expansion Modules. All of the signals are driven directly by the MCU.				

Configuration Headers/Jumpers

Configuration headers/jumpers help to configure the board. Table 7 provides the function of each header, and related headers, registers or devices.

► **Note:** The default settings for all jumpers is OUT.

Table 7. Configuration Headers and Jumpers

Header	Function	Related Headers, Registers or Devices
J1	RJ11	
J2	Modem connector	Header 32
J3	Modem connector	Header 9
J4	Modem connector	Header 2
J6.12 (-CON_DIS), J6.14 (GND)	Console Enable/Disable	J2
J6.11 (-MOD_DIS), J6.9 (GND)	Modem Enable/Disable	
J7	External Vref	Internal Vref Control
J8	Expansion Module Header	
J9	Vref test point	R5
J10	IrDA Enable/Disable	J6.12 (-CON_DIS), J6.14, (GND)



Table 7. Configuration Headers and Jumpers

Header	Function	Related Headers, Registers or Devices
J11	SocketModem Power (3VDC/5VDC)	
J12	RS-485_1_EN	
J13	RS-485_2_EN	
J14	RT_1	
J15	RT_2	

Tables 8 through 13 provide jumper information concerning the shunt status, functions and devices affected of selected jumpers.

Table 8. J6.9–J6.11 -Modem Enable/Disable

Shunt Status	Function	Device Affected
IN	Modem connector (P2) is disabled	UART1 cannot communicate through P2. Ports D and F can be assigned to functions other than UART1.
OUT	Modem connector (P2) is enabled	If the embedded SocketModem is not in the socket, UART1 communicates through P2.

Table 9. J6.12–J6.14 -Console Enable/Disable

Shunt Status	Function	Device Affected
IN	Console connector (P1) is disabled	If J6.12–14 is IN and J10 is IN, Port A (3-5) is assigned to IrDA; if J10 is OUT Port A (3-5) is assigned to UART0.
OUT	Console connector (P1) is enabled	None



Table 10. J7 External Vref

Shunt Status	Function	Device or Register Affected
IN	External Vref is used for ADC	Internal Vref is disabled.
OUT	Internal Vref is used for ADC	Internal Vref is enabled.

Table 11. J9 Vref

	Function	Device or Register Affected
J9-1	Test point to external Vref	Vref
J9-2	GND	None

Table 12. J10 IrDA Enable/Disable

Shunt Status	Function	Device Affected
IN	IrDA enabled	Only the IrDA interface is operational.
OUT	IrDA disabled	UART0 communicates through RS-232. If J6 12-14 is IN Port A (3-5) can be assigned to other functions (console connector P1 is disabled). If J6 12-14 is OUT console connector P1 is enabled (Port A (3-5) is assigned to UART0).

► **Note:** If the IrDA board is installed the Console port is disabled.

Table 13. J11 SocketModem Power (3VDC/5VDC)

Shunt Position	Function	Device Affected
IN (pins 1-2)	5.0VDC is provided to power SocketModem	SocketModem
OUT (pins 2-3)	3.3VDC is provided to power SocketModem	SocketModem



Table 14. J12–RS-485_1_Enable First Interface

Shunt Position	Function	Device Affected
IN	RS-485 disabled	none
OUT	Enables RS-485 first interface	Console and IrDA

Table 15. J13–RS-485_1_Enable Second Interface

Shunt Position	Function	Device Affected
IN	RS-485 disabled	none
OUT	Enables RS-485 second interface	SocketModem

Table 16. J14–RT_1,Termination Resistors Enable, RS-485 First Interface

Shunt Position	Function	Device Affected
IN	First RS-485 interface termination resistors disabled	none
OUT	Enables first RS-485 interface termination resistors	none

Table 17. J15–RT_2,Termination Resistors Enable, RS-485 Second Interface

Shunt Position	Function	Device Affected
IN	Second RS-485 interface termination resistors disabled	none
OUT	Enables second RS-485 interface termination resistors	none

Embedded Modem

Figure 13 identifies the embedded modem location.

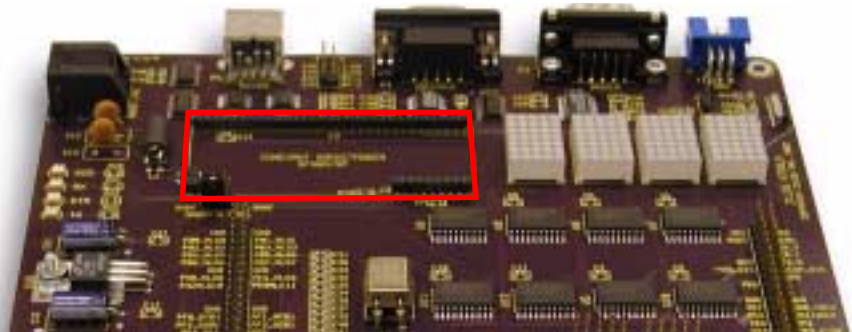


Figure 13. Embedded Modem Placement

The evaluation board provides for an embedded modem, the SF56D/SP SocketModem. The SocketModem is not part of the kit. Table 18 lists ordering information for the modem. The interface communicates with the modem serially. LEDs D7-D10 provide information about the status of the modem's interface lines. The phone line connection is for the U.S. only. To connect to a modem outside of the U.S., modifications must be made to the board. The necessary data is found in the SocketModem Data Sheet (<http://www.multitech.com/DOCUMENTS/datasheets/2028.asp>).



Table 18. SocketModem Ordering Information

Sales Order Number	Part Number	Configuration
SC56H1	SC43-E310-001	V.90/56 kbps, serial interface, +5V operation
SC56H1_L	SC43-E320-001	V.90/56 kbps, serial interface, +3.3V operation
SC336H1	SC34-E310-001	V.34/33.6 kbps, serial interface, +5V operation
SC336H1_L	SC34-E310-001	V.34/33.6 kbps, serial interface, +5V operation
SC144H1	SC14-E310-001	V.32/14.4 kbps, serial interface, +5V operation
SC144H1_L	SC14-E310-001	V.32/14.4 kbps, serial interface, +5V operation

Pushbuttons

The Z8 Encore!TM evaluation board contains three user-configurable pushbuttons (see Figure 14).

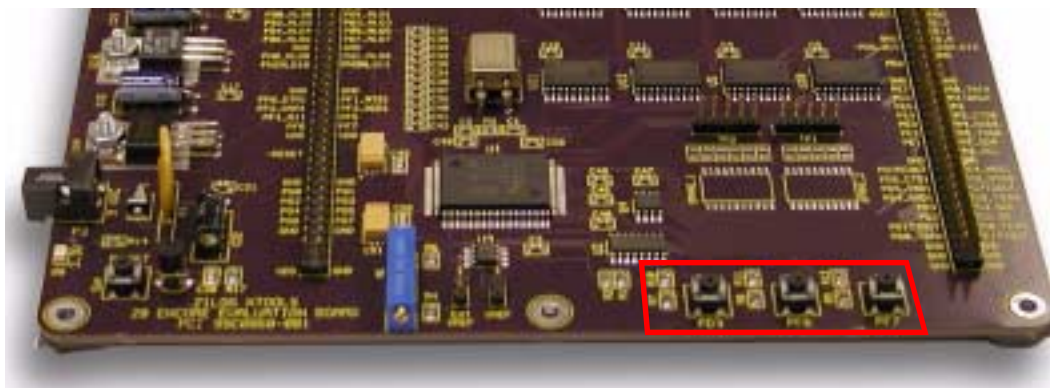
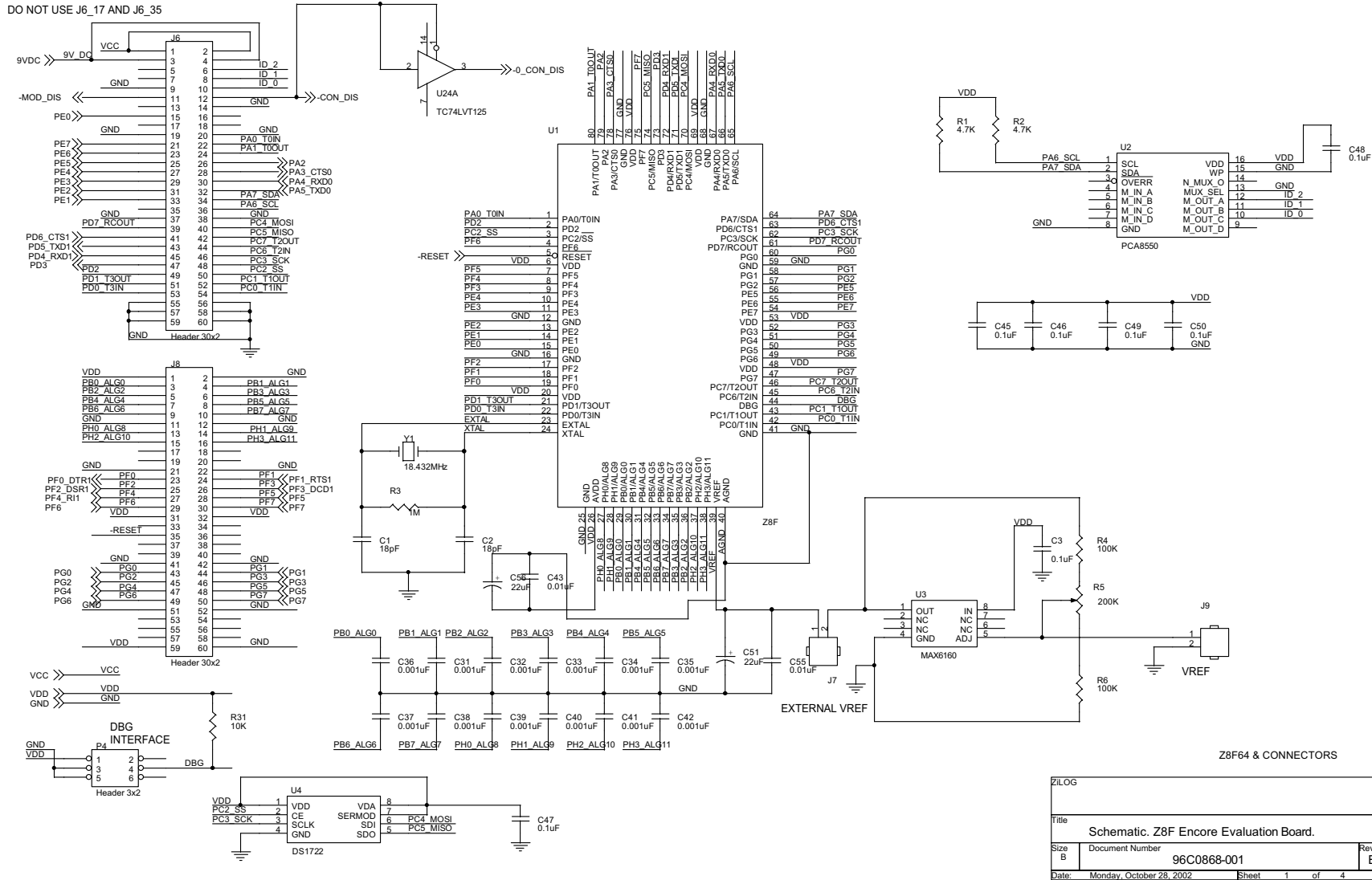


Figure 14. User-Configurable Pushbuttons



Schematics

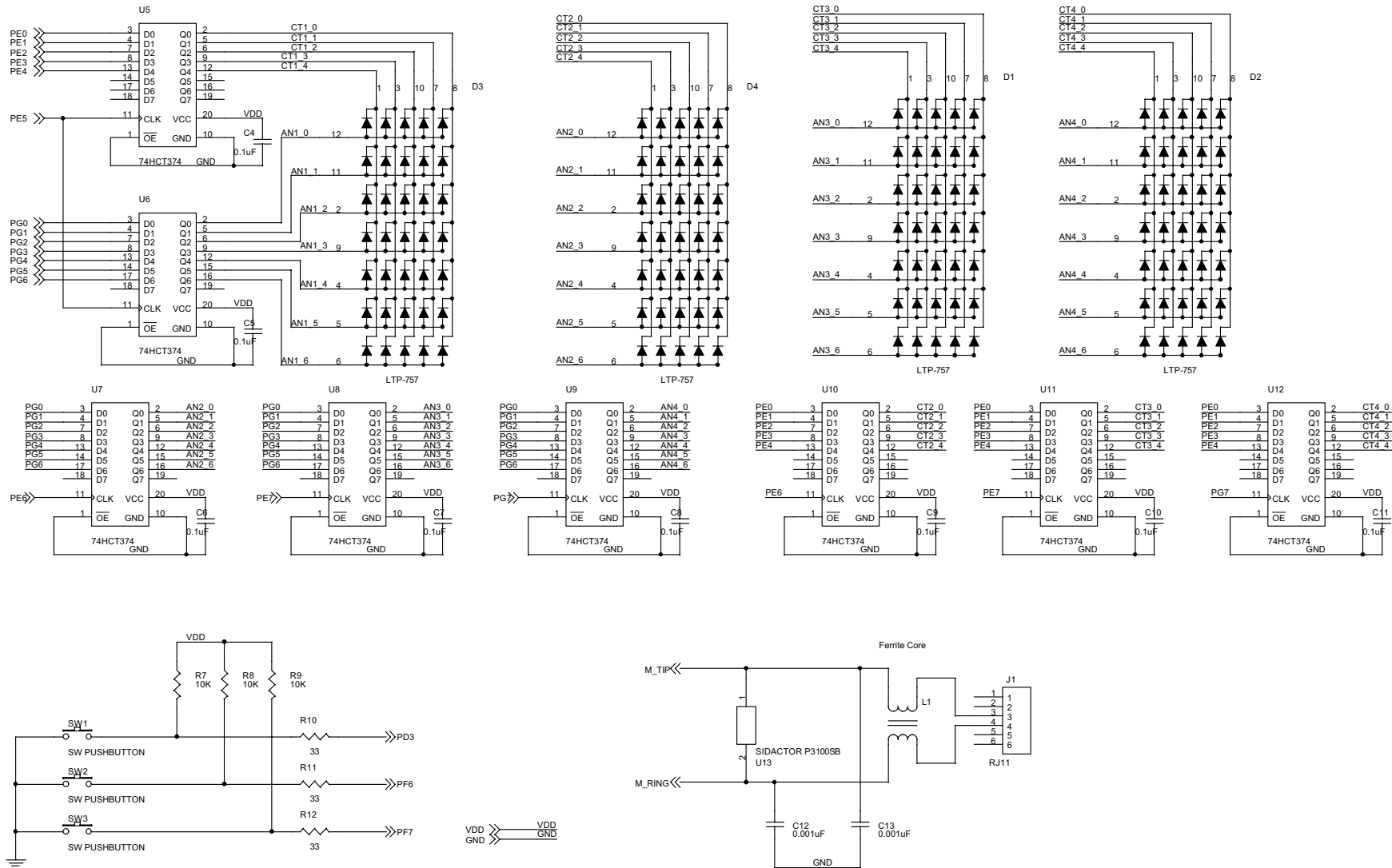
This section includes schematics for the Z8 Encore![™] Target Module and the Z8 Encore![™] Evaluation Board.



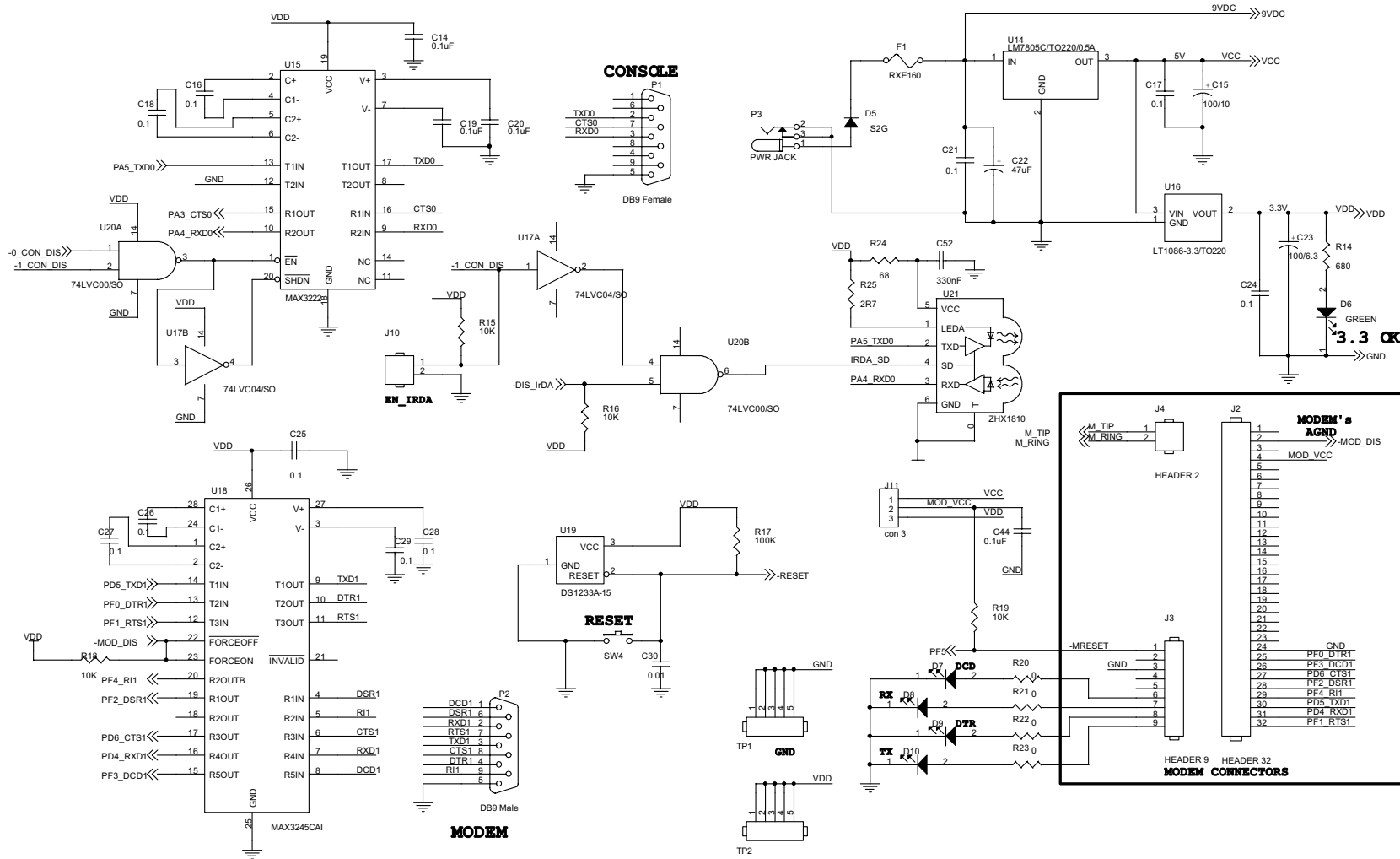
Z8F64 & CONNECTORS

ZILOG	
Title: Schematic, Z8F Encore Evaluation Board.	
Size: B	Document Number: 96C0868-001
Date: Monday, October 28, 2002	Sheet: 1 of 4

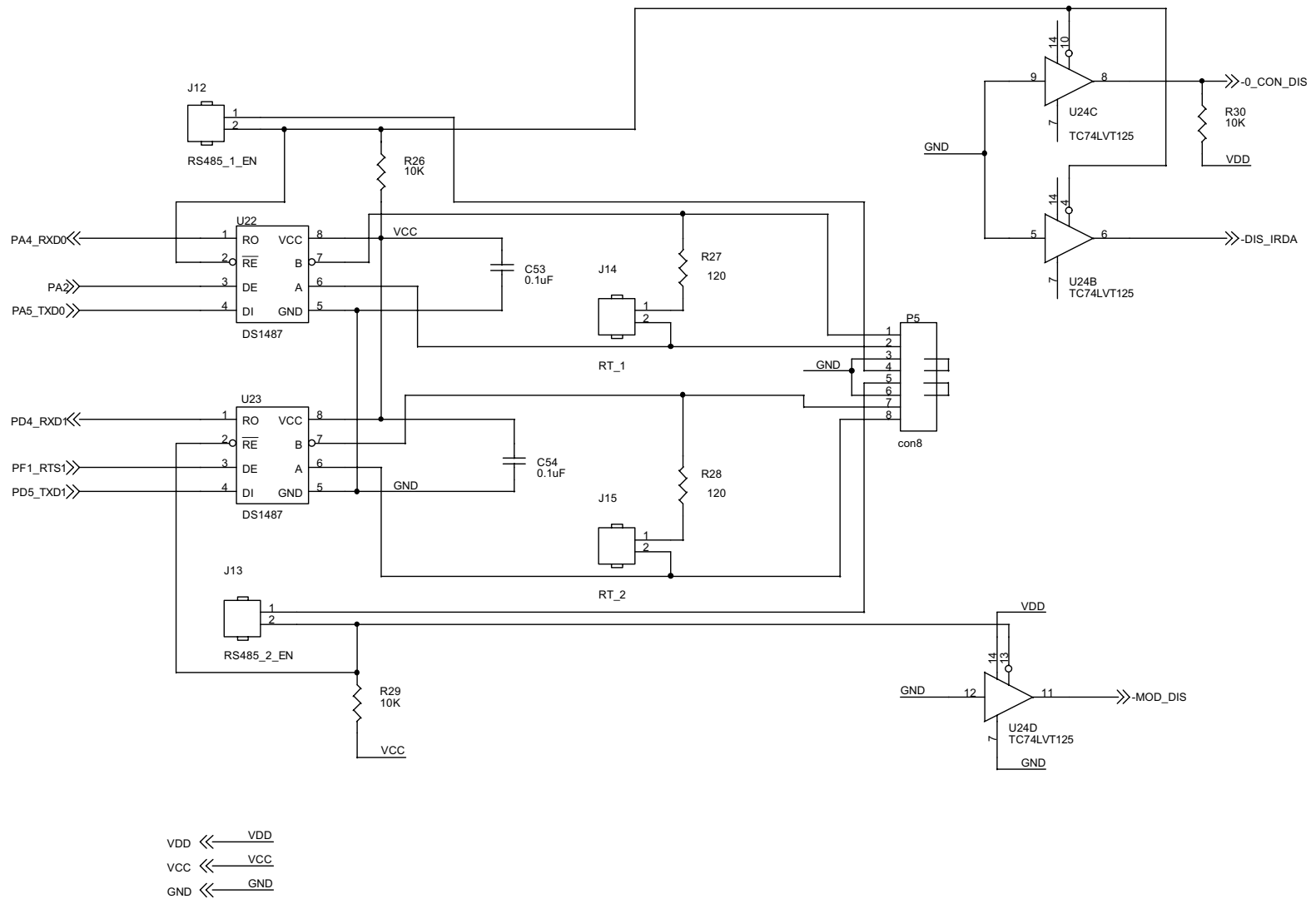
Schematic, Z8 Encore!™ Evaluation Board, Page 1 of 4 (96C0868-001 Rev. C)



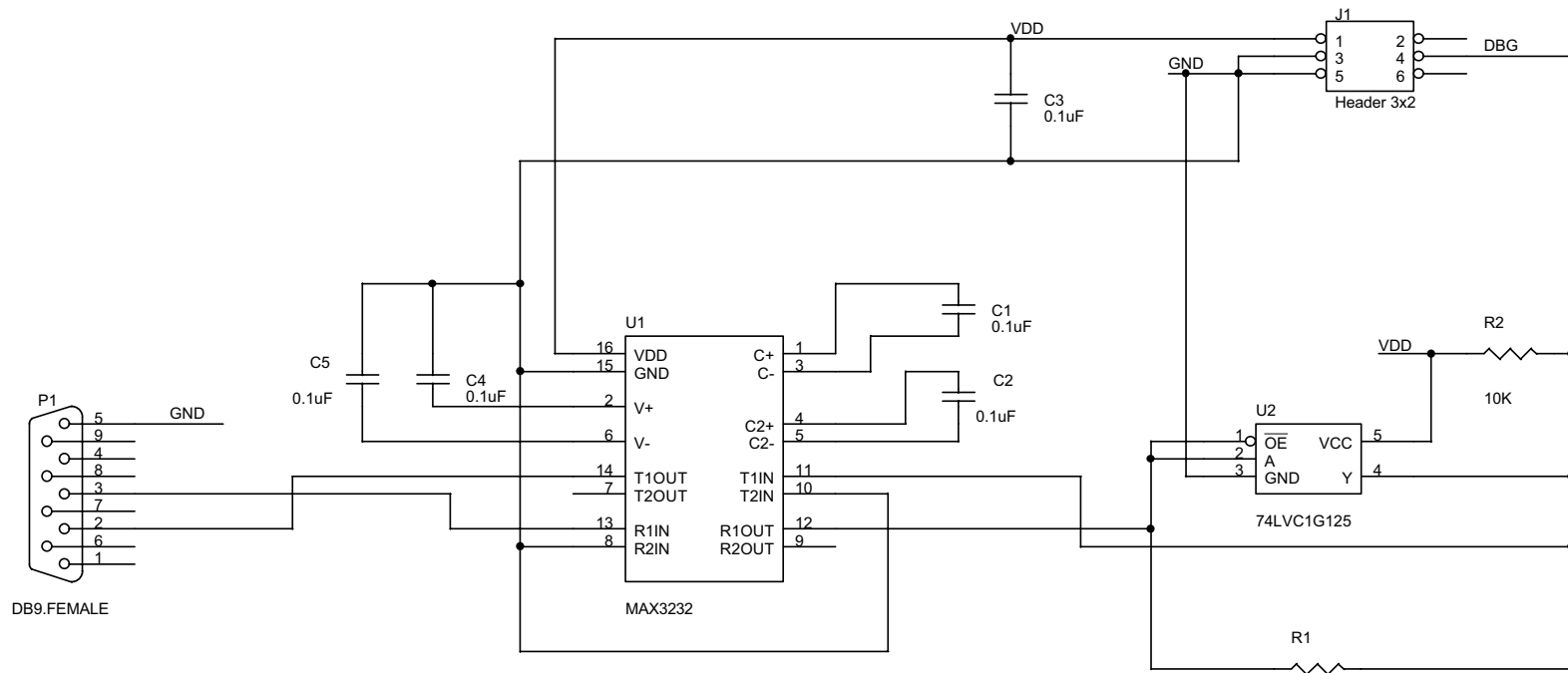
Schematic, Z8 Encore!™ Evaluation Board, Page 2 of 4 (96C0868-001 Rev. C)



Schematic, Z8 Encore!™ Evaluation Board, Page 3 of 4 (96C0868-001 Rev. C)



Schematic, Z8 Encore!™ Evaluation Board Page 4 of 4 (96C0868-001 Rev. C)



Schematic, Z8 Encore!™ Target Interface Module



Index

A

- addressing, LED 19
- anode and cathode 19
- anode assignments 19
- array, LED 19

B

- block diagram 17
- blocks, evaluation board 16
- board
 - target module interface 5
- button, reset 14

C

- C address for configuration register 21
- cathode/modem assignments 20
- communication devices, serial 20
- configuration 4
 - headers 28
 - register, I2C 21
- connectors, RS-232 and RS-485 22
- console enable/disable 29
- conversion, one-wire to two-wire interface 22

D

- debug and testing 22

- digital thermometer 21
- documentation 3

E

- embedded modem 32
- ENDEC 21
- evaluation board
 - block diagram 17
 - configuration headers 28
 - DIS_IrDA 30
 - embedded modem 32
 - expansion module interface 23
 - external Vref 30
 - features 15
 - I2C
 - interface 20
 - J11 VDC values 30
 - J6 signals, pins and functions 23
 - J8 signals, pins and functions 25
 - major blocks 16
 - power and communication 22
 - SocketModem ordering information 33
 - SPI interface 21
 - target module 22
 - Vref 30
- expansion module interface 23
- external Vref 30

F

- features, evaluation board 15, 17



features, Z8 Encore! 18
file menu 13
fixed voltage 30

G

getting started 13

H

hardware 2
host system configuration 4

I

I2C
 configuration register 21
 interface 20
infrared communication 21
installation 5
 directory 12
 the ZDC II Z8 Encore!TM
 software 8
 wizard screen shot 8
interface
 four-wire 21
 I2C 20
 one- to two-wire conversion 22
 SPI 21
IrDA
 enable/disable 30
 transceiver 21

J

J11 VDC values 30
J6 signals, pins and functions 23
J8 signals, pins and functions 25

K

kit contents 2

L

LED
 addresses 19
 modem status 32
LED anode and cathode information 19
license agreement screenshot 10

M

MCU 18
minimum host system configuration 4
modem enable/disable 29

O

open project dialog box screenshot 13

P

PCA8550 21
phone line connections 32
plug-in modules 22
power and communication 22
power supply 22



program folder 12
pushbuttons 33

R

register pairs 19
registration key
 identifier 10
 screenshot 11
registration window 12
requirements 4
reset button 14
RS-232 connector 22
RS-232 signal conversion 5
RS-485 connector 22

S

SCL (serial clock line) 20
SDA (serial data line) 20
serial communications devices 20
setting up the evaluation board 5
shunt status 29
signals
 J6 23
 J8 25
SocketModem 32
 ordering information 33
 power 30
software 3
SPI interface 21
suggested host system configuration 4
system/software requirements 4

T

target interface module board 5, 22

U

user-configurable pushbuttons 33
using ZDS 13

V

Vref 30

Z

Z8 Encore!
 features 18
 MCU 18
ZDS II Help 12